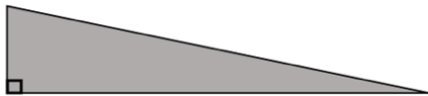


Diagnostic quiz to identify students' understanding of key concepts, prior to teaching new content

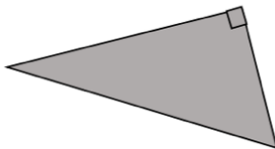
Name: _____

1. Label the sides of these triangles for Pythagoras' Theorem (a, b, c)

a)



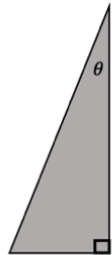
b)



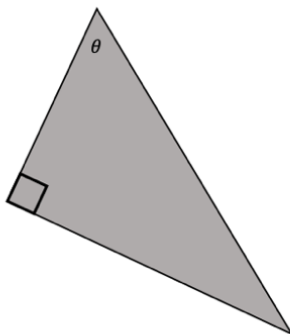
2. Label the sides of these triangles for Trigonometric Ratios **IN RELATION TO THE ANGLE θ**

e.g. hypotenuse (hyp), adjacent (adj), opposite (opp)

a)

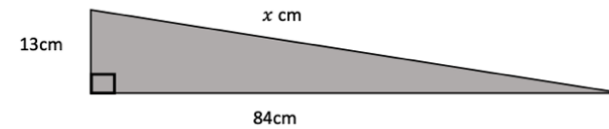


b)

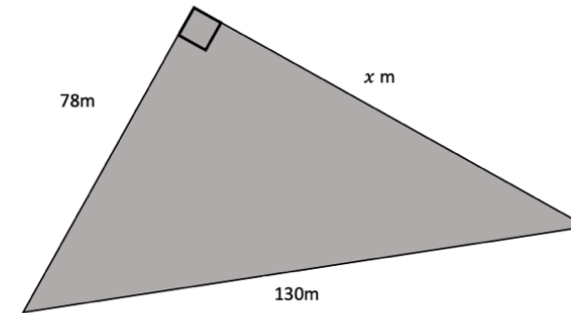


3. Find the length of the missing side in each triangle.

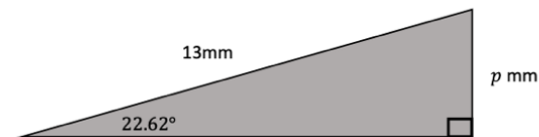
a)



b)



4. Find the length of the missing side, p



5. Find the angle marked θ

